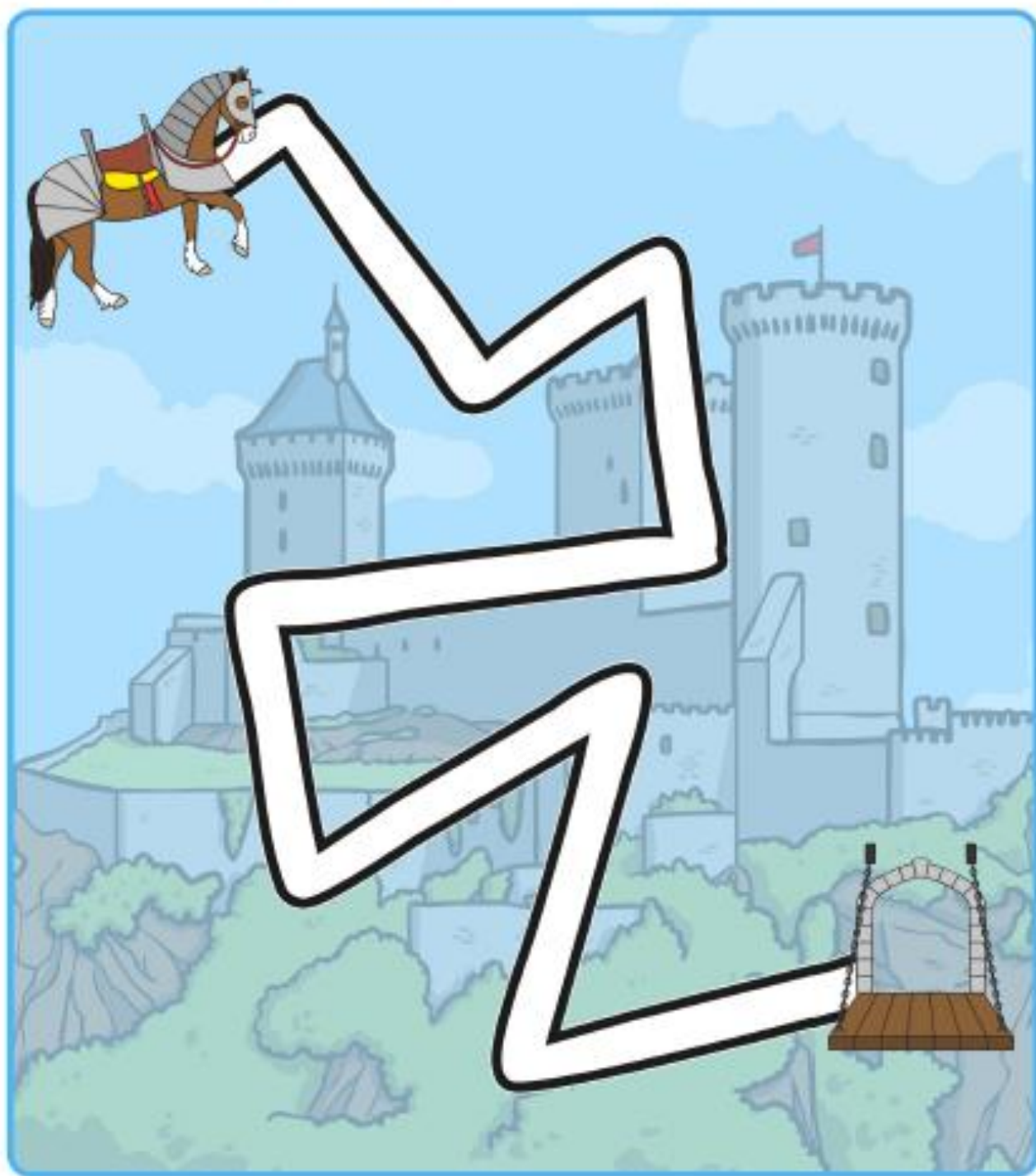


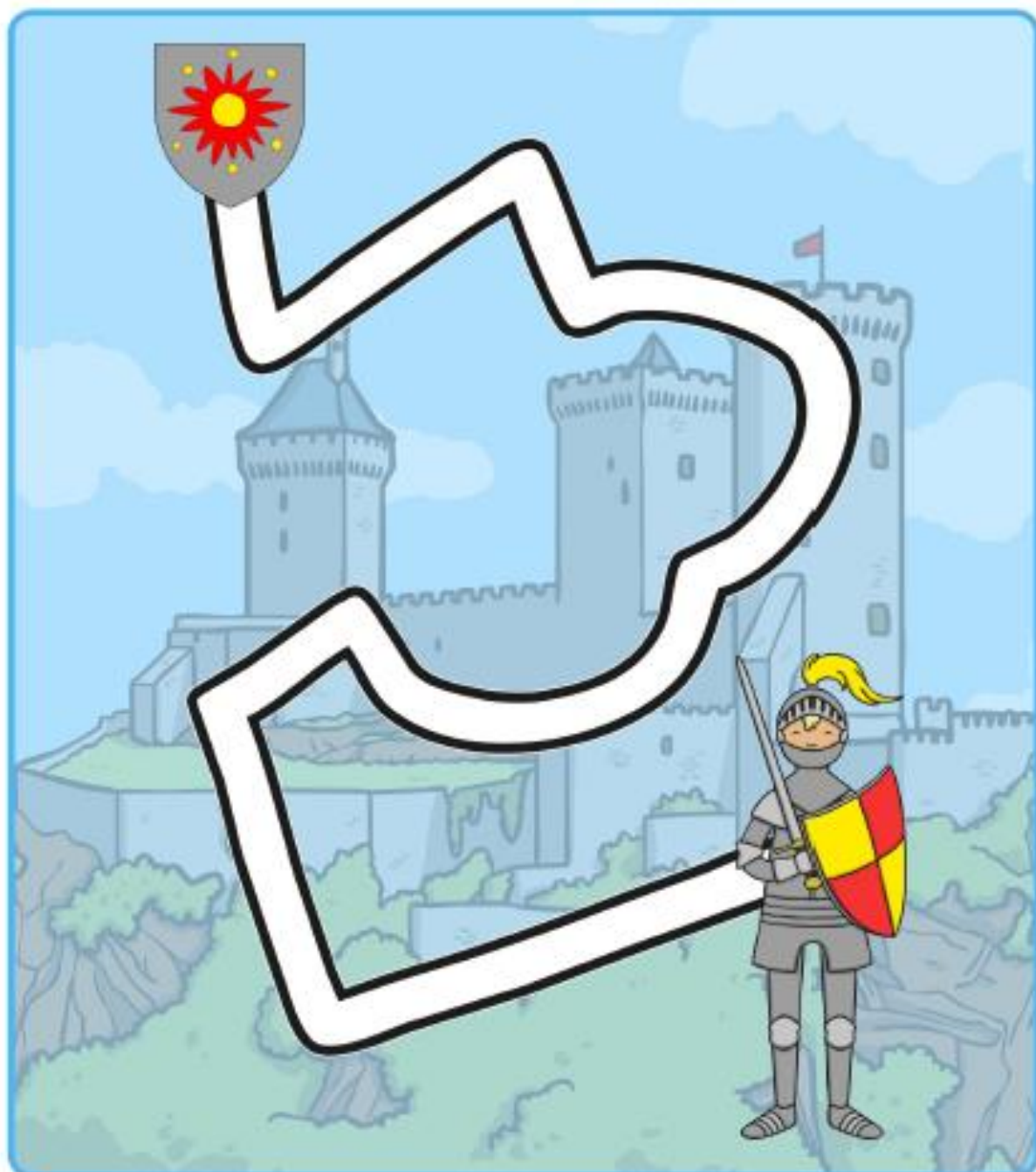
Castles and Knights

Use your pencil to draw a line to connect the two pictures.
Try and stay in the middle of the path.



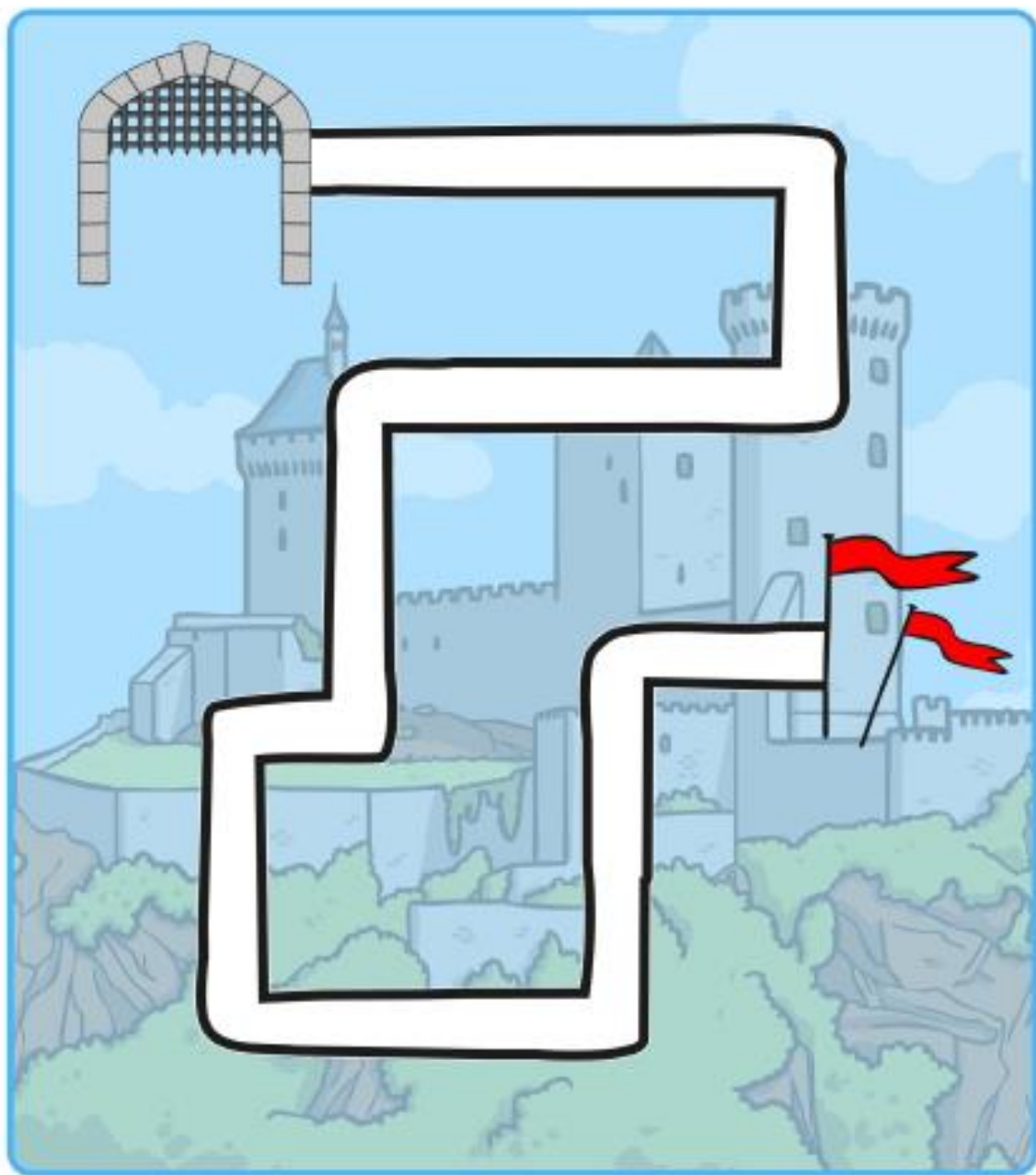
Castles and Knights

Use your pencil to draw a line to connect the two pictures.
Try and stay in the middle of the path.



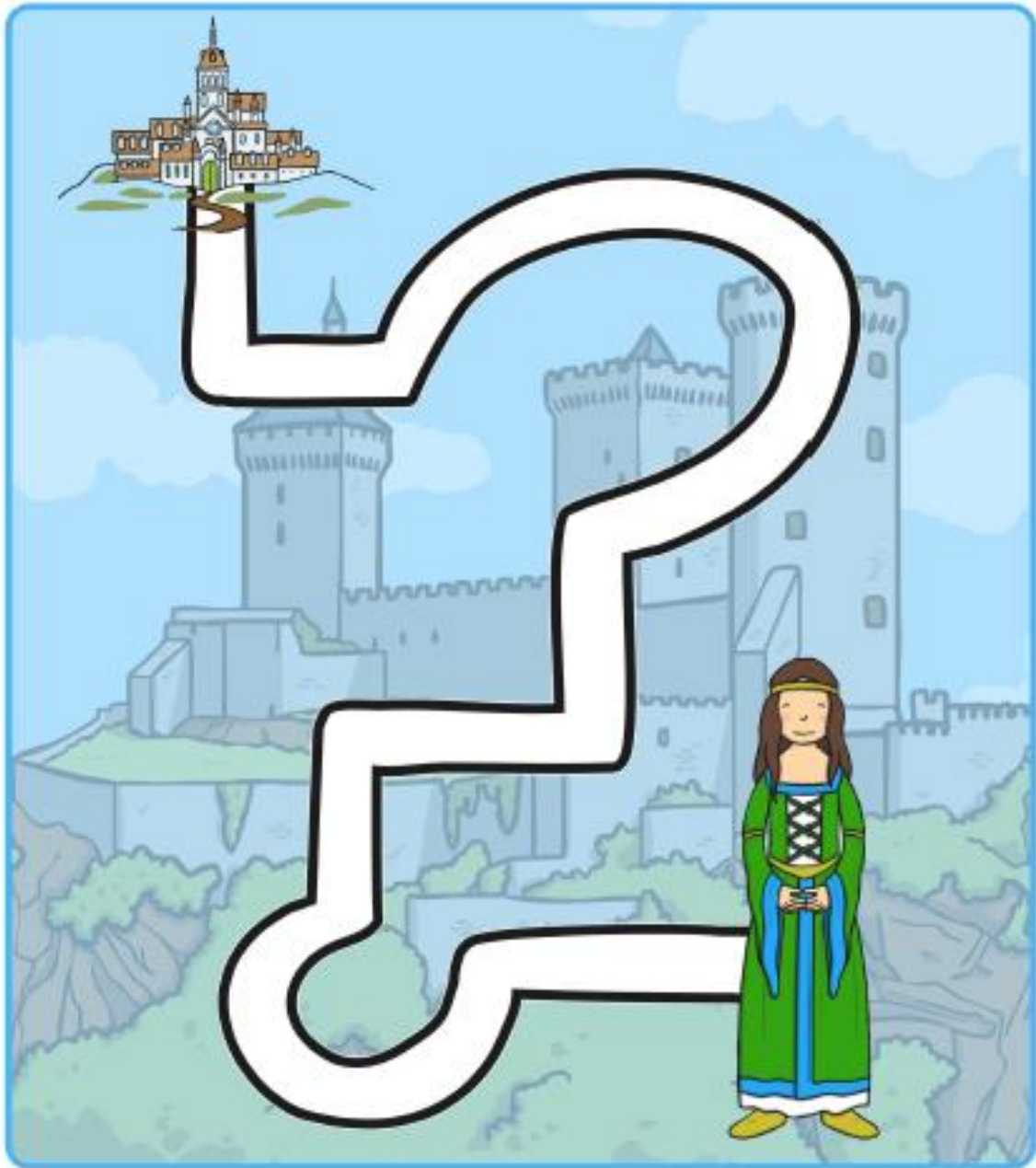
Castles and Knights

Use your pencil to draw a line to connect the two pictures.
Try and stay in the middle of the path.



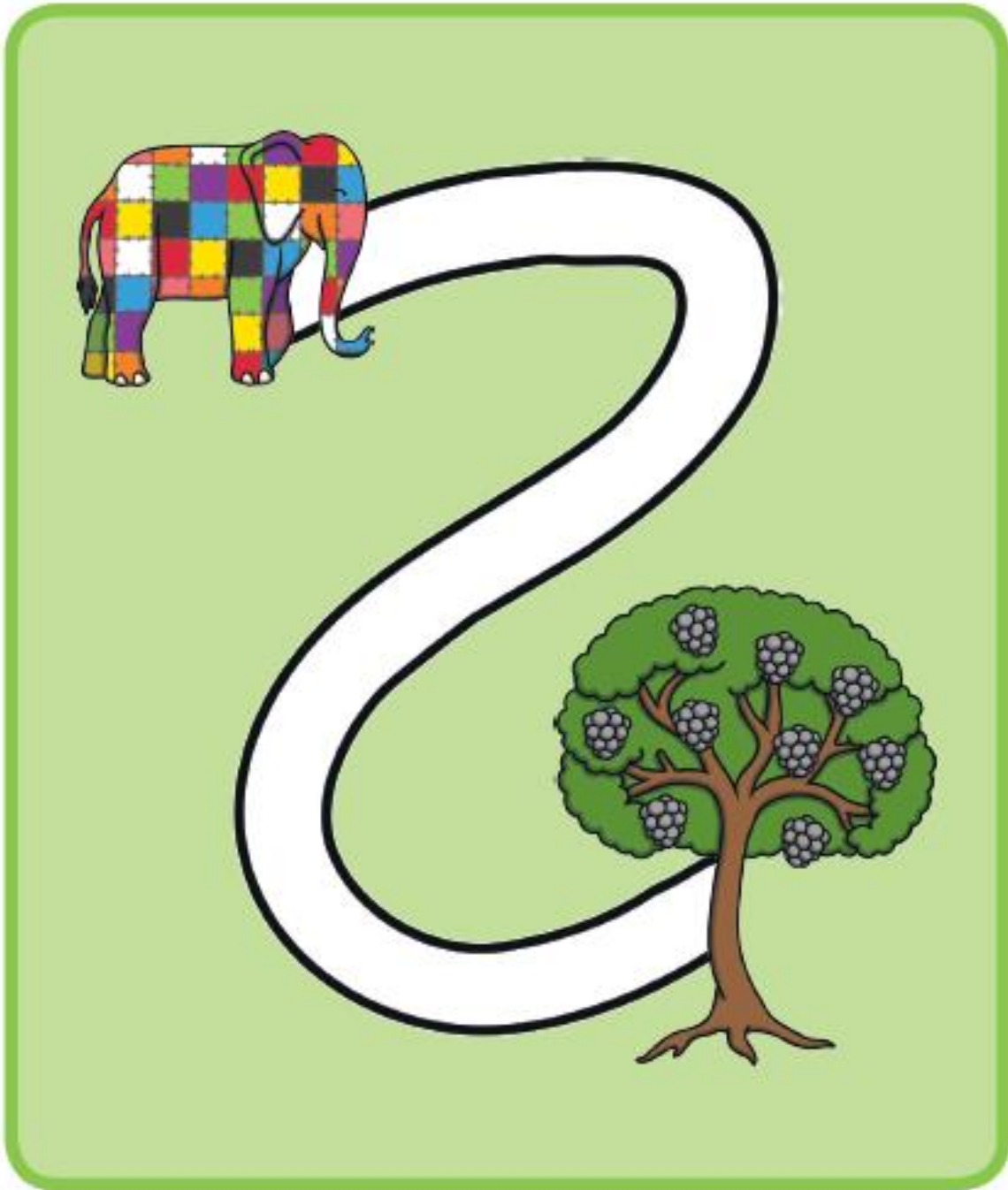
Castles and Knights

Use your pencil to draw a line to connect the two pictures.
Try and stay in the middle of the path.



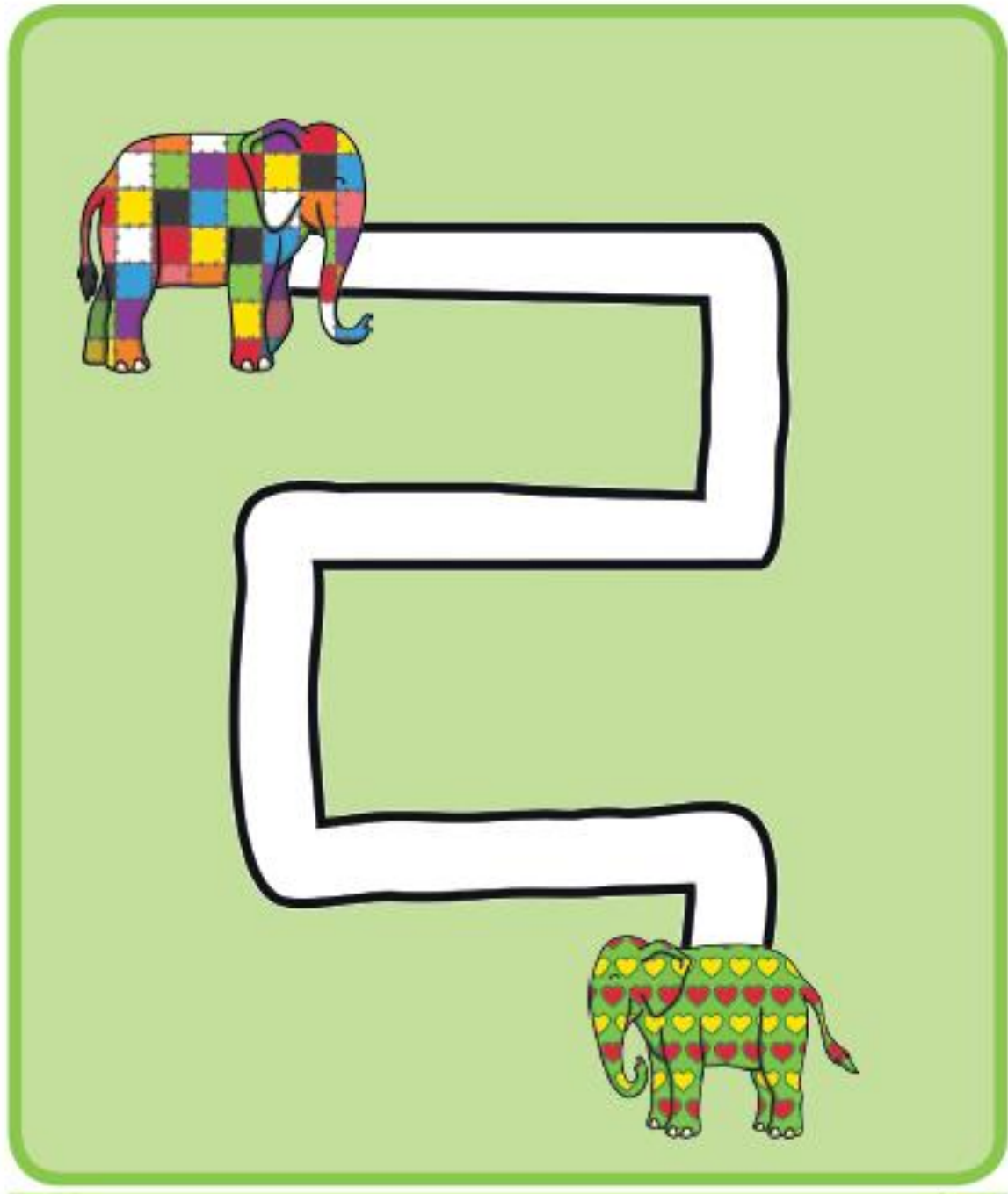
Elmer

Use your pencil to draw a line to connect Elmer and the tree.
Try to stay in the middle of the path.



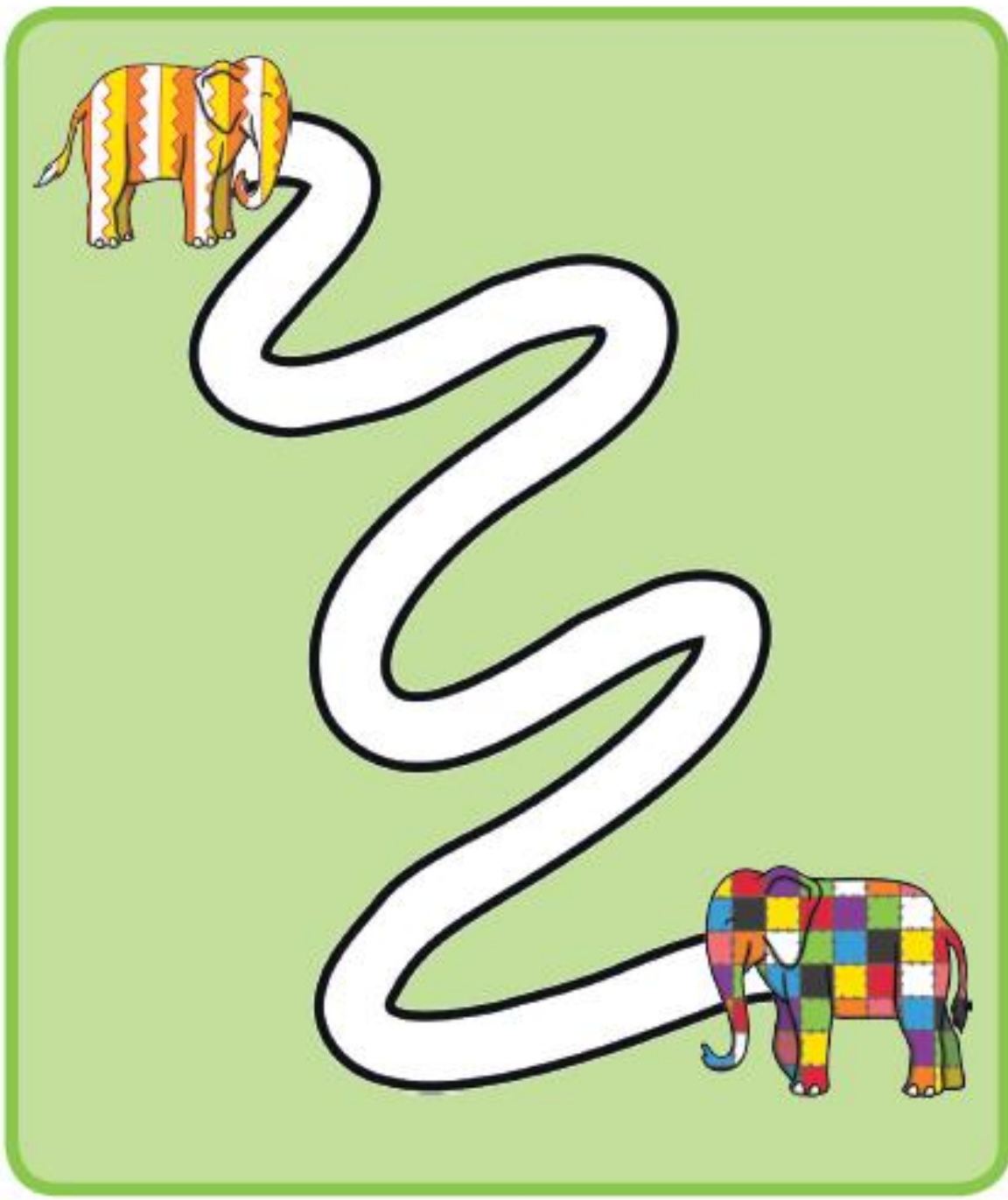
Elmer

Use your pencil to draw a line to connect Elmer and the colourful elephant.
Try to stay in the middle of the path.



Elmer

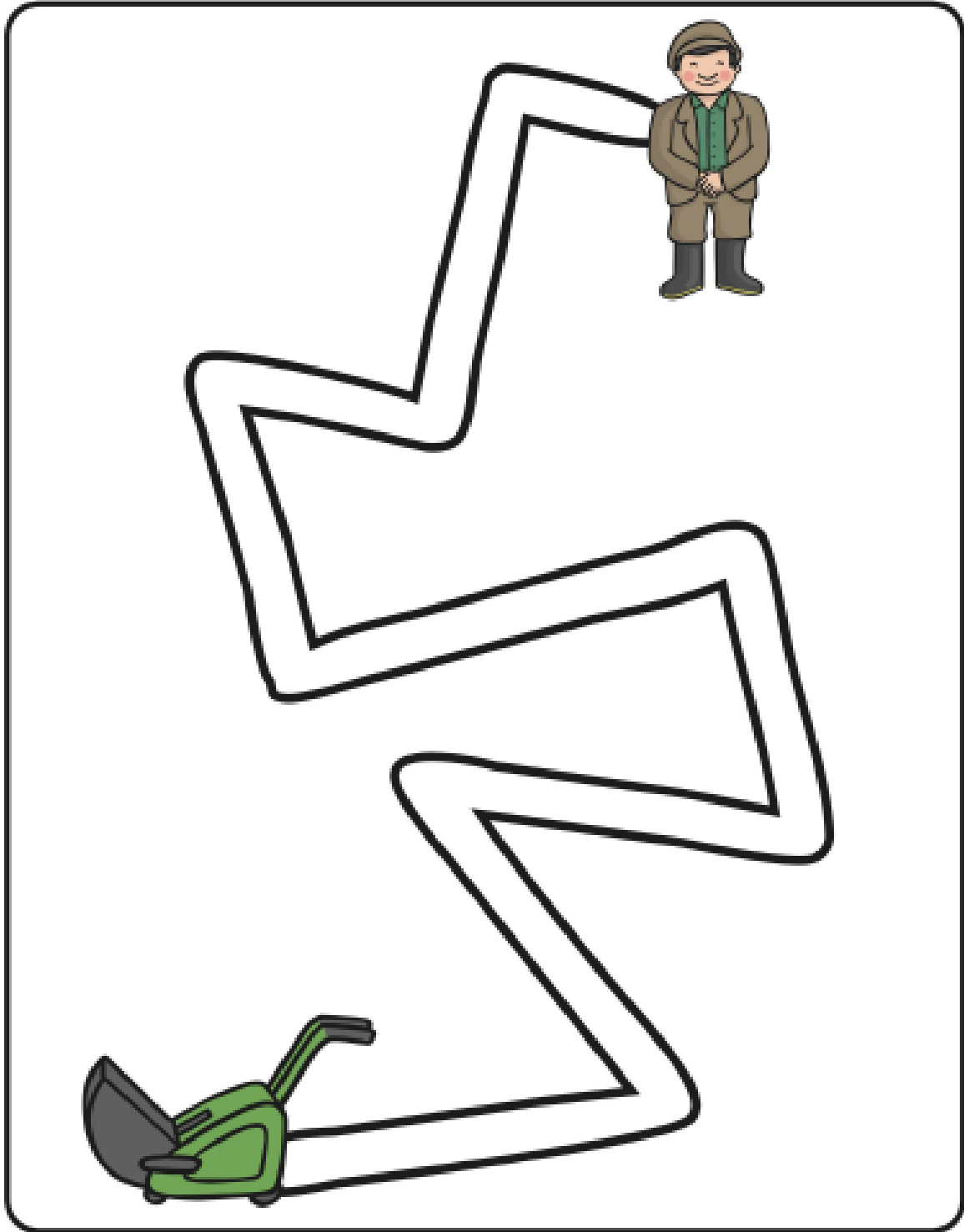
Use your pencil to draw a line to connect the colourful elephant and Elmer.
Try to stay in the middle of the path.



Percy and the Park Keeper Maze

Draw a line between the two pictures.

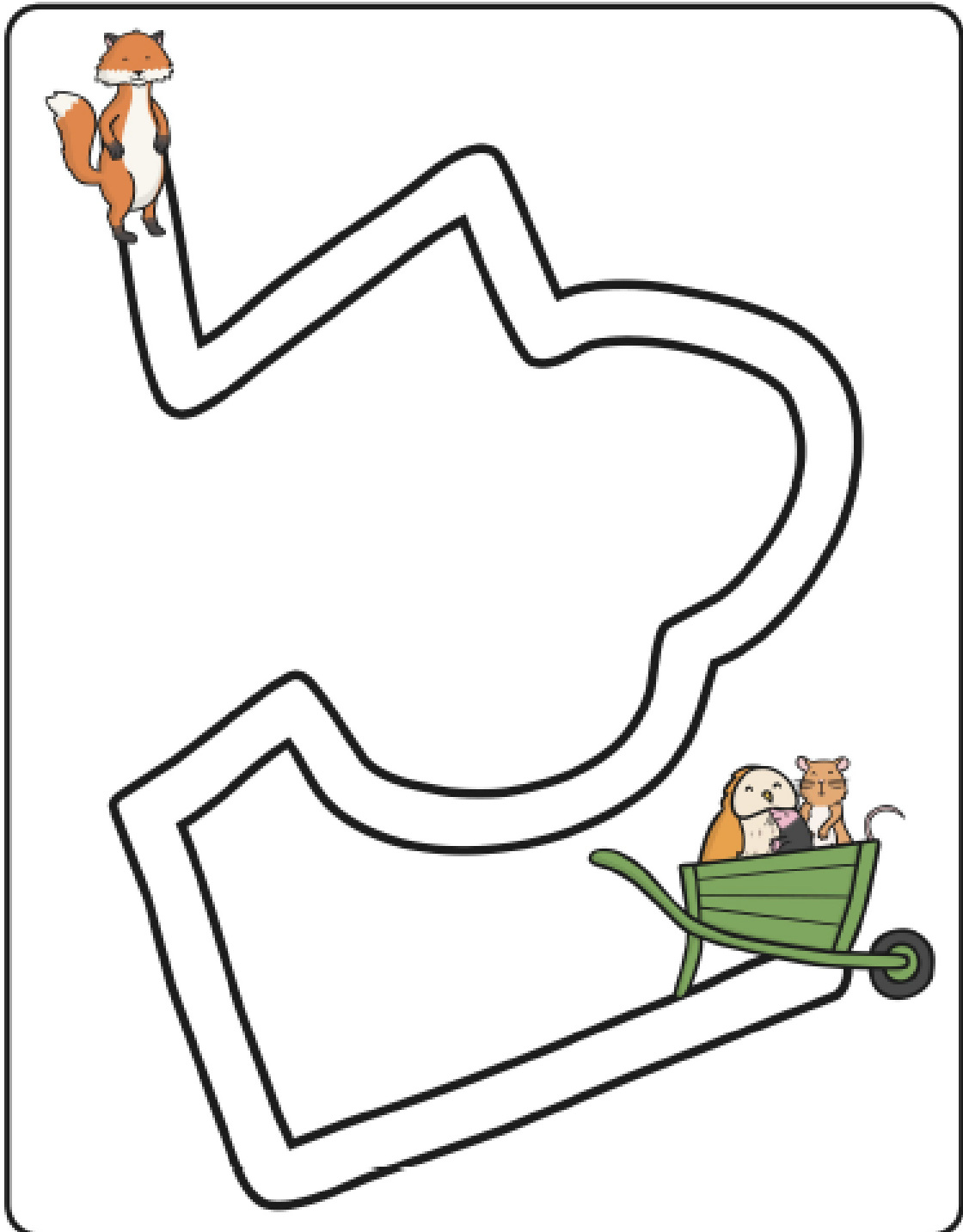
Stay in the middle of the path!



Percy and the Park Keeper Maze

Draw a line between the two pictures.

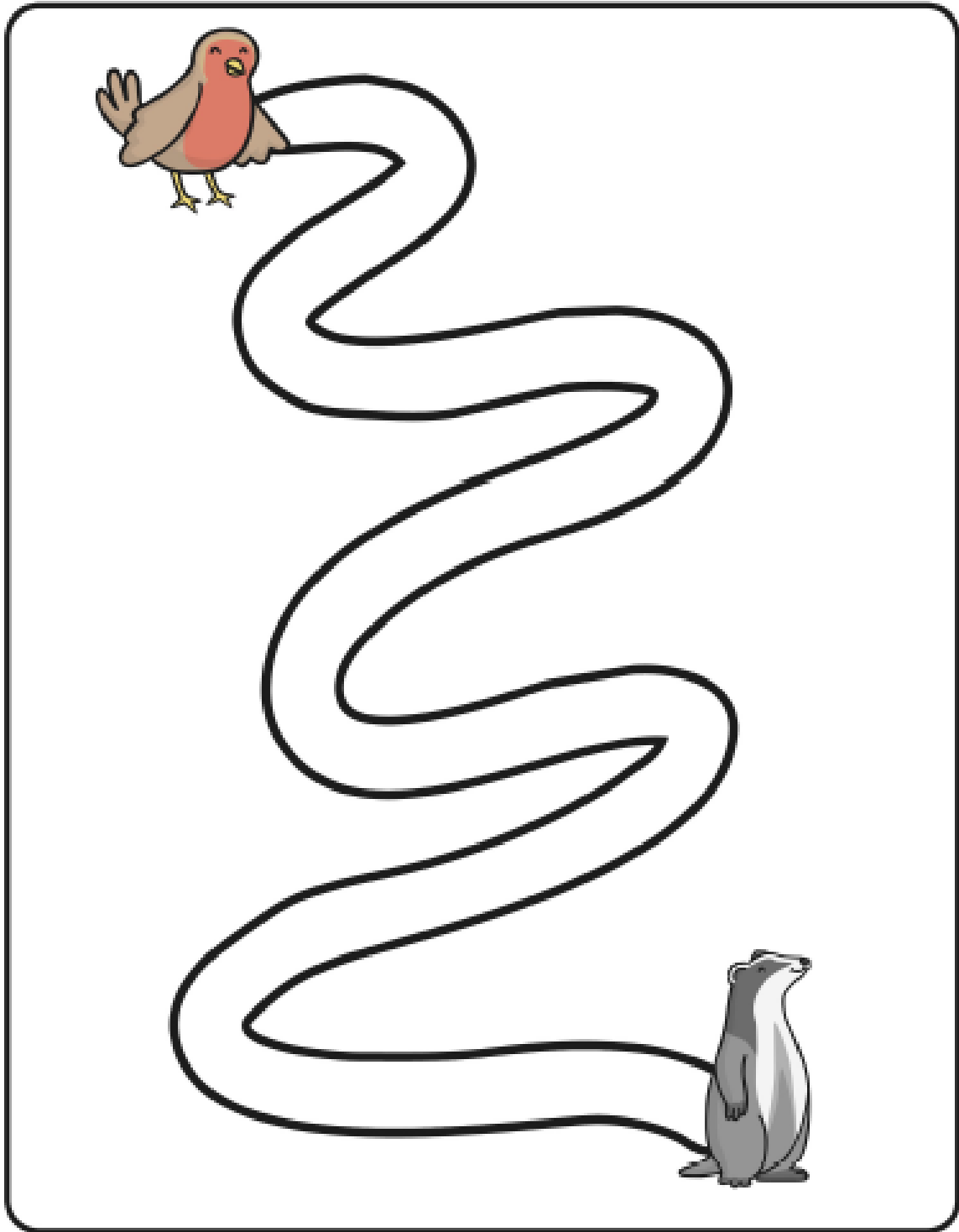
Stay in the middle of the path!



Percy and the Park Keeper Maze

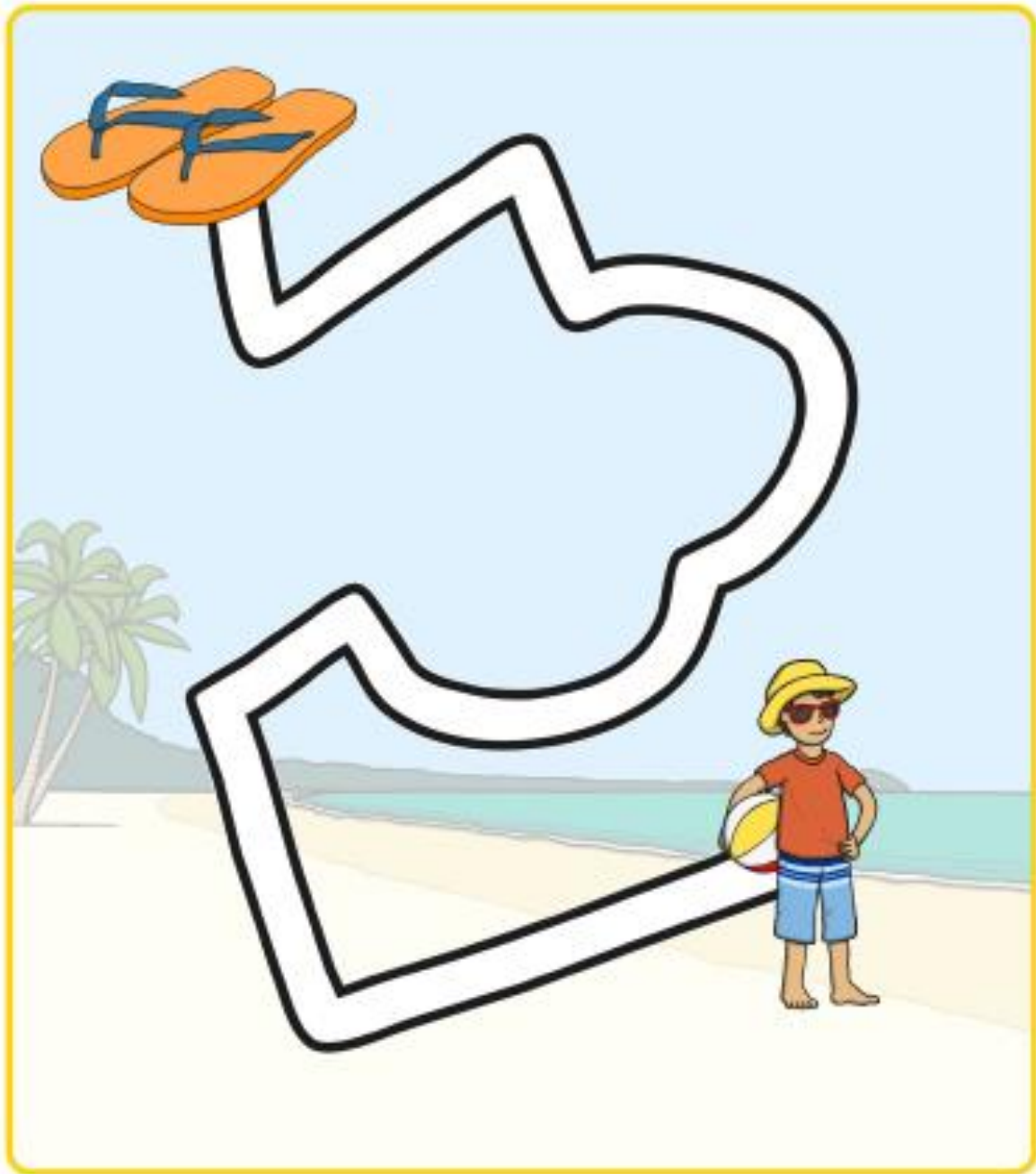
Draw a line between the two pictures.

Stay in the middle of the path!



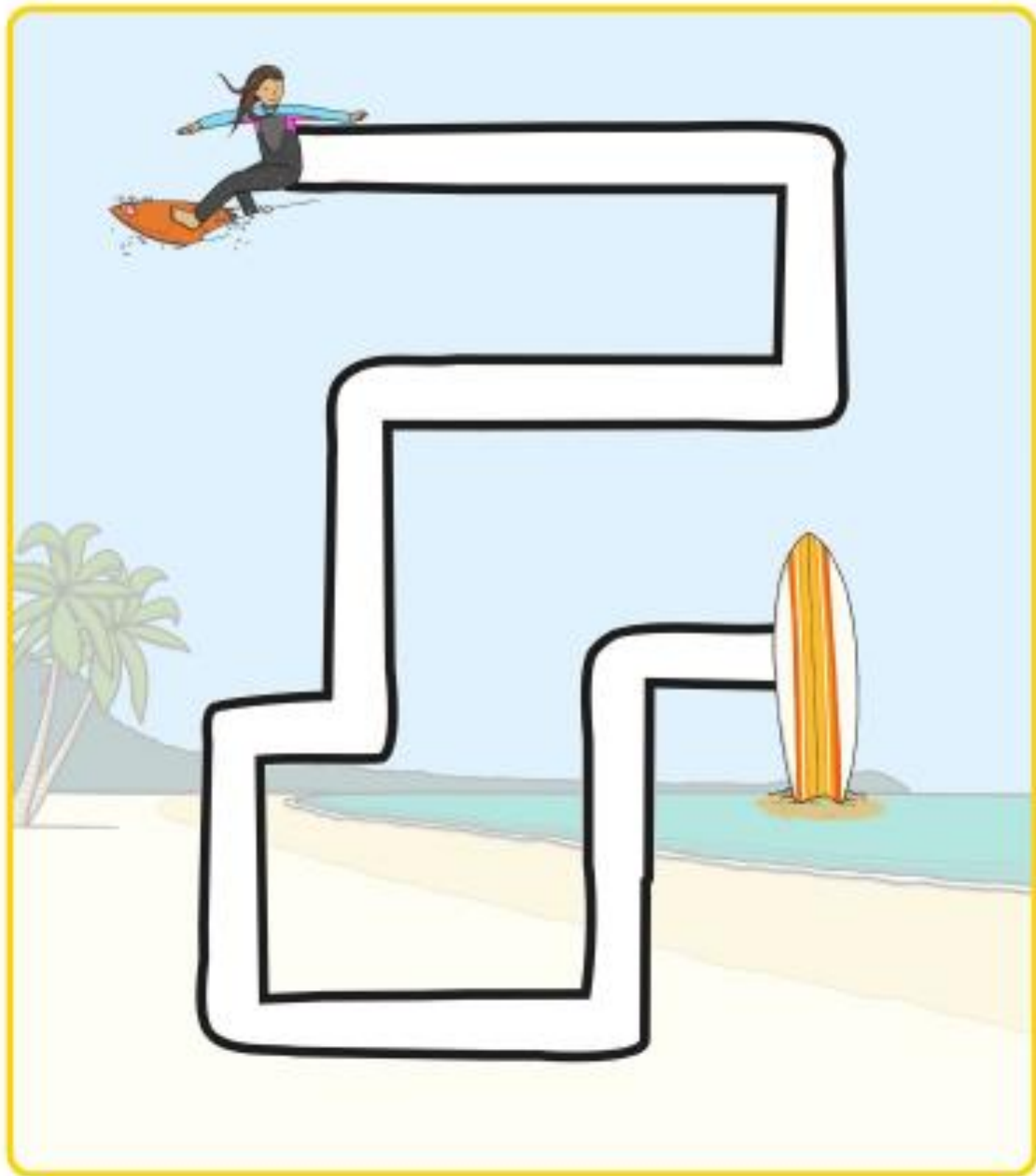
Summer

Use your pencil to draw a line to connect the flip flops and boy.
Try and stay in the middle of the path.



Summer

Use your pencil to draw a line to connect the surfer and surfboard.
Try and stay in the middle of the path.



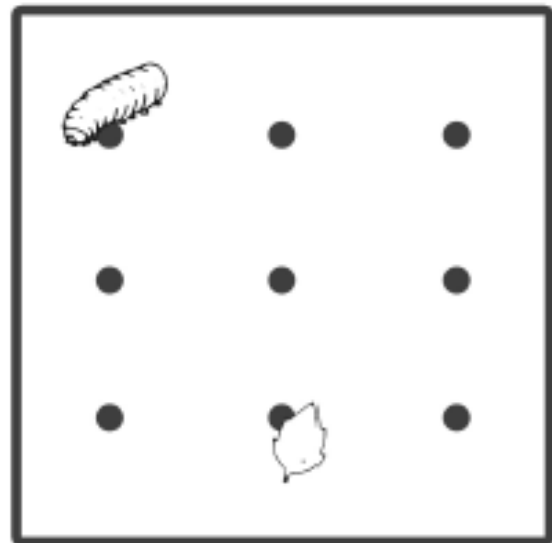
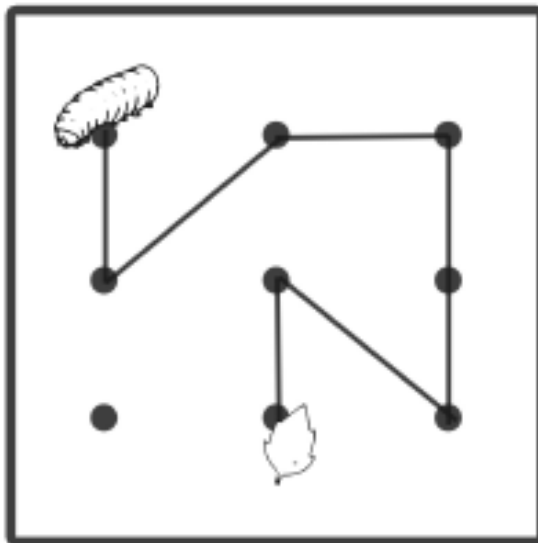
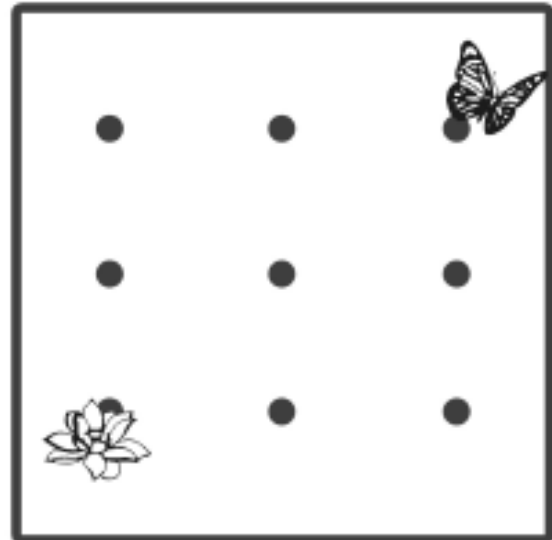
Summer

Use your pencil to draw a line to connect the bee and sunflower.
Try and stay in the middle of the path.



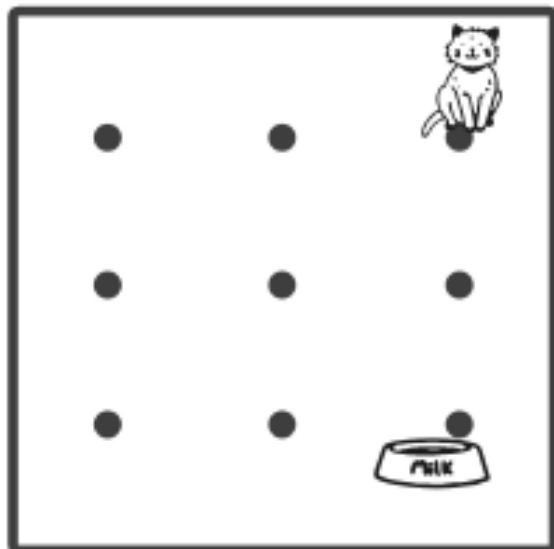
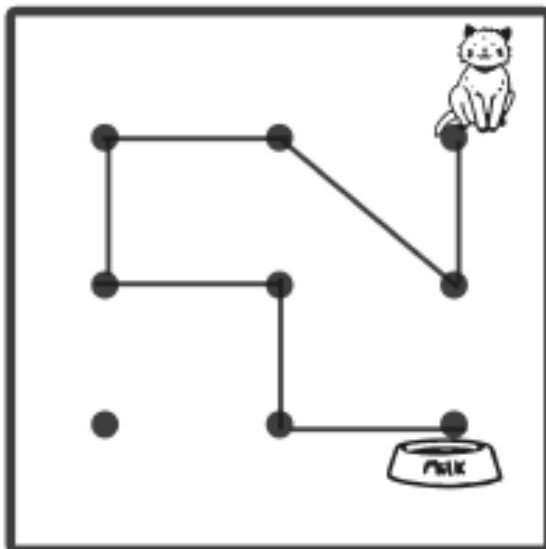
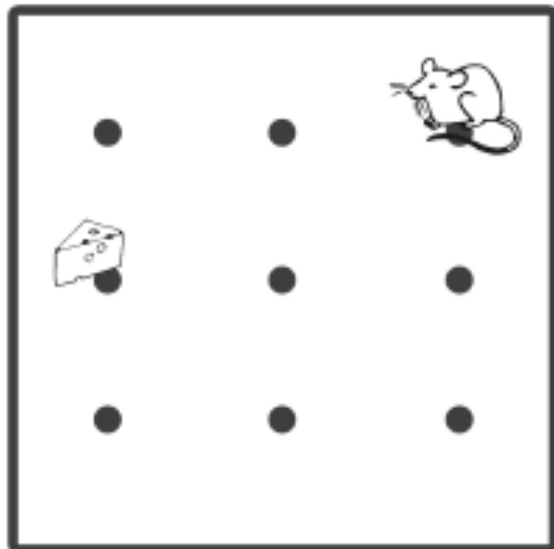
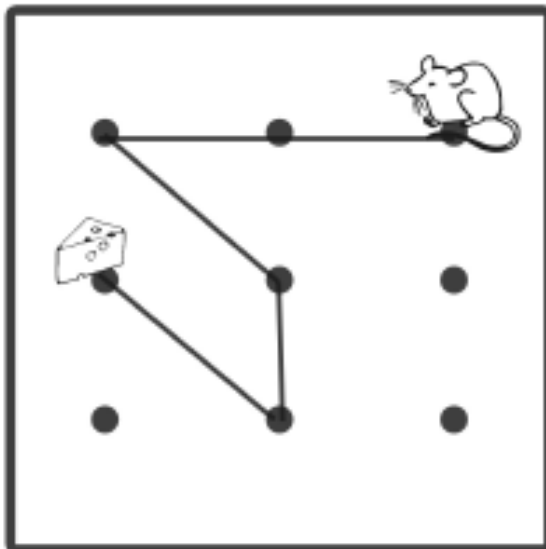
Pencil Control Maze Copying

Directions: Copy the path along the dots.



Pencil Control Maze Copying

Directions: Copy the path along the dots.



Pencil Control Maze Copying

Directions: Copy the path along the dots.

